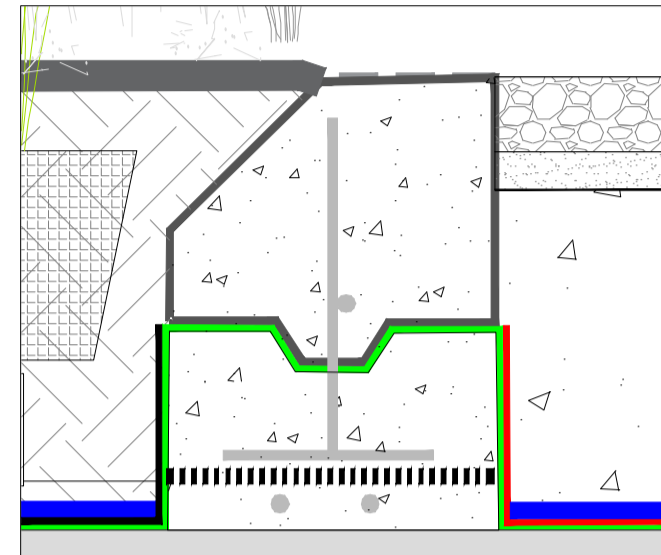
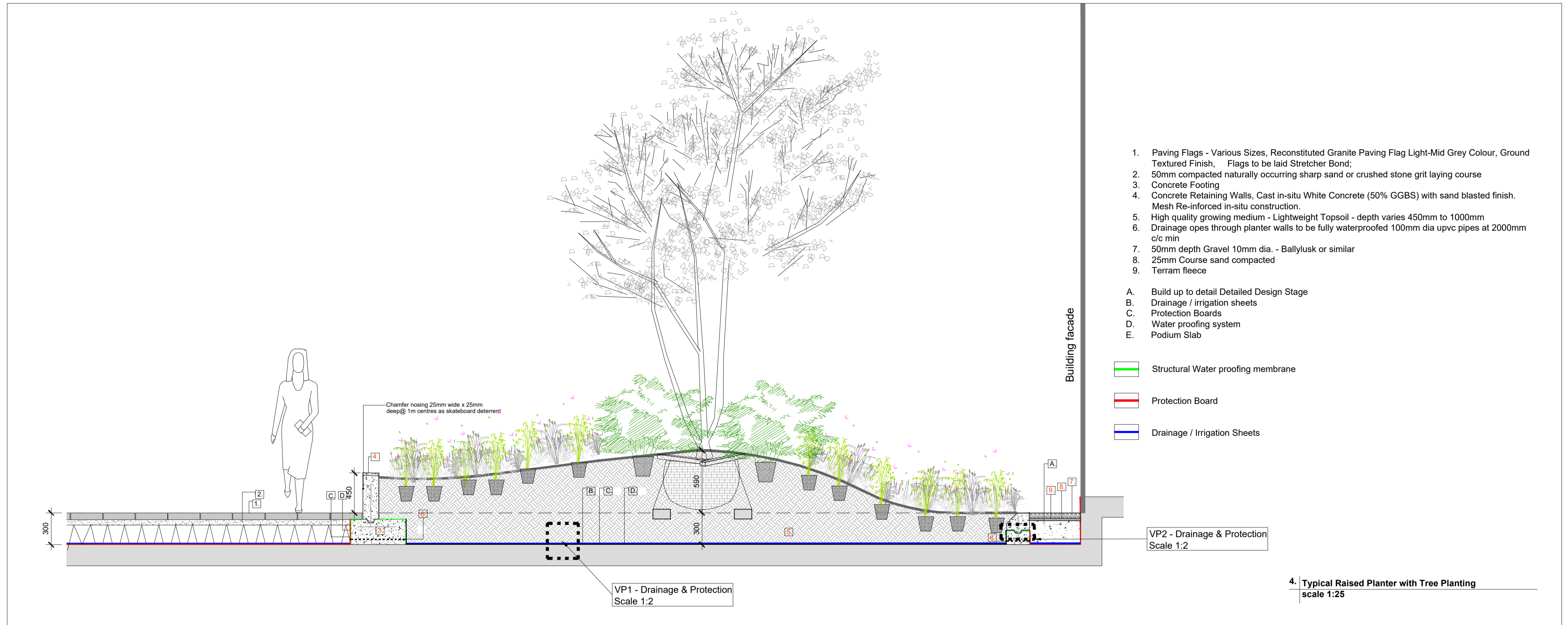


VP1 - Drainage & Protection
Vertical building upstand & horizontal podium
Scale 1:2



VP2 - Drainage & Protection
Concrete upstand & edge restraint
Scale 1:5

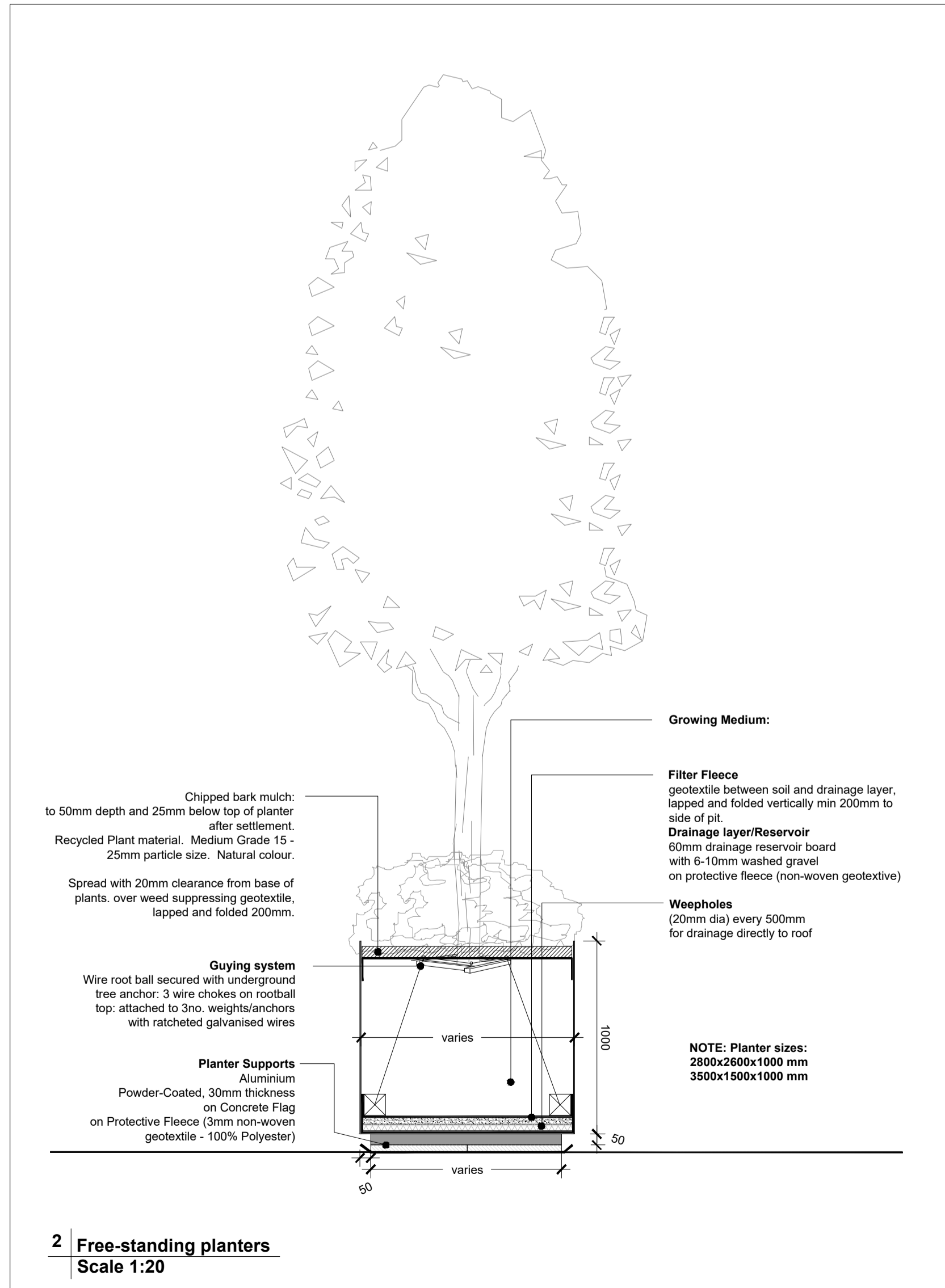


1. Paving Flags - Various Sizes, Reconstituted Granite Paving Flag Light-Mid Grey Colour, Ground Textured Finish. Flags to be laid Stretcher Bond;
 2. 50mm compacted naturally occurring sharp sand or crushed stone grit laying course
 3. Concrete Footing
 4. Concrete Retaining Walls, Cast in-situ White Concrete (50% GGBS) with sand blasted finish. Mesh Re-inforced in-situ construction.
 5. High quality growing medium - Lightweight Topsoil - depth varies 450mm to 1000mm
 6. Drainage opes through planter walls to be fully waterproofed 100mm dia upvc pipes at 2000mm c/c min
 7. 50mm depth Gravel 10mm dia. - Ballylusk or similar
 8. 25mm Course sand compacted
 9. Terram fleece
- A. Build up to detail Detailed Design Stage
B. Drainage / Irrigation sheets
C. Protection Boards
D. Water proofing system
E. Podium Slab

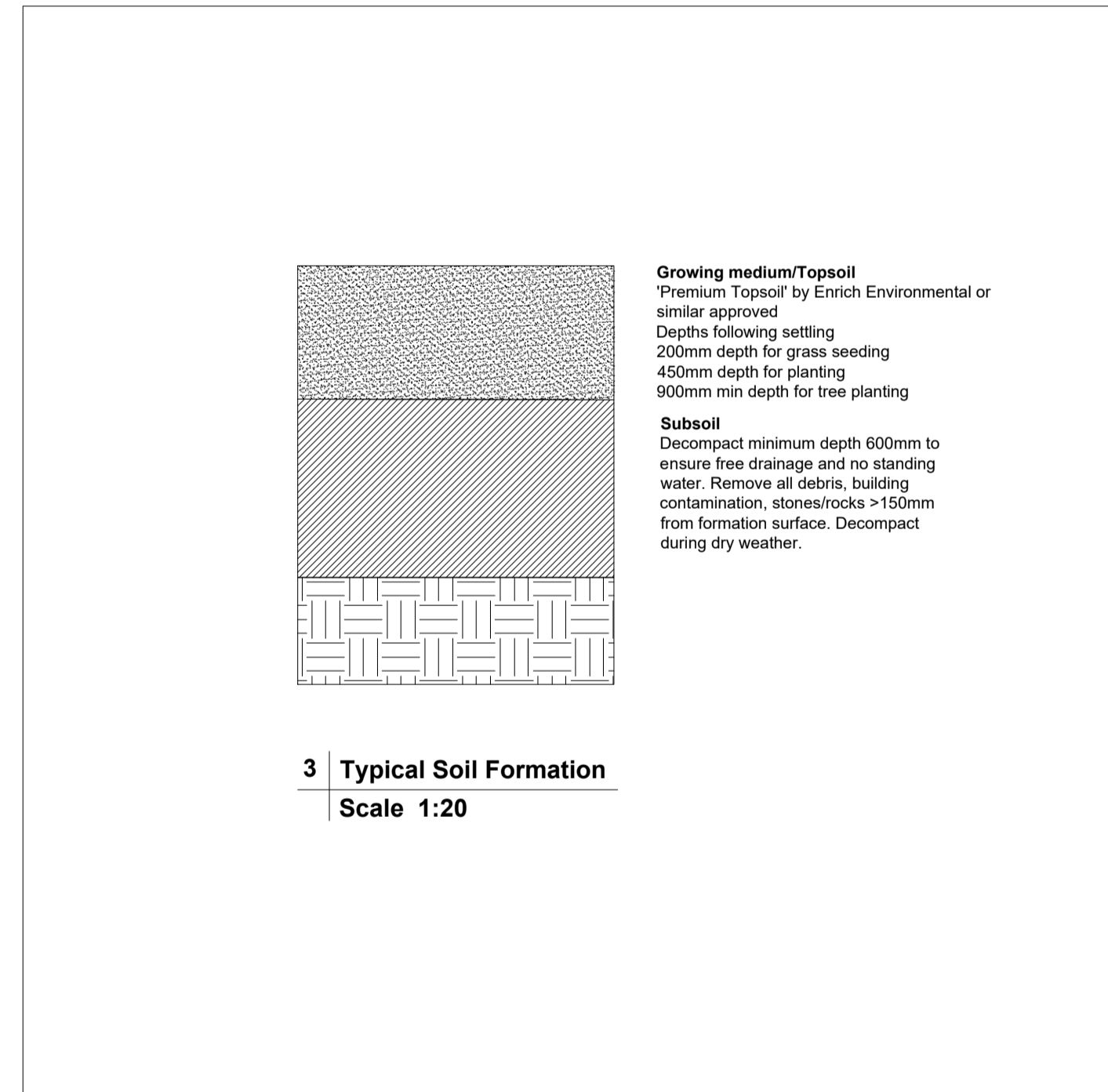
- Structural Water proofing membrane
- Protection Board
- Drainage / Irrigation Sheets

VP2 - Drainage & Protection
Scale 1:2

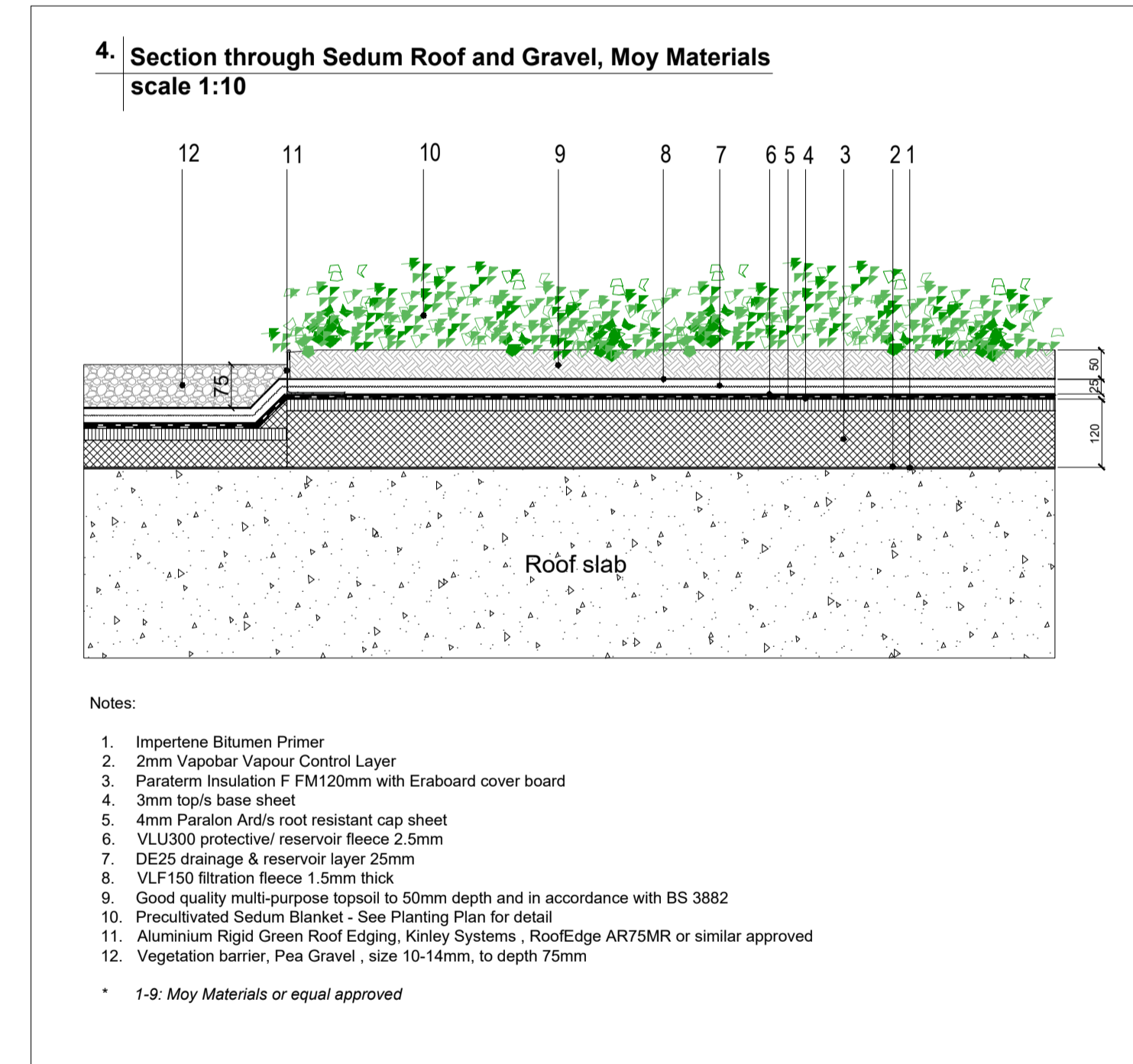
4. Typical Raised Planter with Tree Planting
scale 1:25



2 Free-standing planters
Scale 1:20



3 Typical Soil Formation
Scale 1:20



4. Section through Sedum Roof and Gravel, Moy Materials
scale 1:10

- Notes:
1. Impertene Bitumen Primer
 2. 2mm Vapobar Vapour Control Layer
 3. Paralerm Insulation F FM120mm with Eraboard cover board
 4. 3mm top's base sheet
 5. 4mm Paralon Ard's root resistant cap sheet
 6. VLU300 protectivel/ reservoir fleece 2.5mm
 7. DE25 drainage & reservoir layer 25mm
 8. VLF150 filtration fleece 1.5mm thick
 9. Good quality multi-purpose topsoil to 50mm depth and in accordance with BS 3882
 10. Precultivated Sedum Blanket - See Planting Plan for detail
 11. Aluminium Rigid Green Roof Edging, Kinley Systems - RoofEdge AR75MR or similar approved
 12. Vegetation barrier, Pea Gravel, size 10-14mm, to depth 75mm
- * 1-9. Moy Materials or equal approved

- NOTES:
1. This drawing is intended to show landscape architectural proposals only. Please refer to Architects and Engineer's drawings for relevant details of buildings, structures, roads, parking, etc.
 2. The copyright of this drawing is vested with Murray & Associates. This drawing may not be copied or reproduced without written consent.
 3. All materials referred to on this drawing - including plant species - are indicative and subject to change following detailed site investigation. Significant changes, if any are required, will be referred to the relevant authority for agreement.
 4. This drawing is not suitable for use for construction purposes.
 5. Discrepancies to be referred to Murray & Associates for clarification.

Rev	Date	Revision	Drawn	Checked
IFP	12-04-19	Issue For Planning	JB	MB

Client:	Ires Residential Properties Ltd	Project Title:	RB Central, Rockbrook Estate
Sheet Title:	Planting Details	Scale:	1/100 @ A1
Sheet No.:	1729_PL_CD_01	Date:	12-04-19
Project Architect:	TOTP	Revision:	IFP
Copyright MURRAY and Associates, 2019			